

# Coastal Country Park Walks

## Mumby to Hogsthorpe



Historic England

# Introduction



The villages of Mumby and Hogsthorpe lie within the Lincolnshire Coastal Country Park (LCCP) a few miles inland from the coast. Mumby's origins date back to the Anglo-Saxon period and Hogsthorpe was first recorded in the 12th century.

The walk will take in both villages and the countryside between them.

The Coastal Country Park stretches along the coast from Sandilands to Chapel St Leonards, and inland to Hogsthorpe, Mumby, Anderby and Huttoft. There are miles of stunning sandy beaches, wildlife packed nature reserves and varied attractions including the North Sea Observatory, Cloud Bar, Round and Round House and Sound Tower.



Partner organisations are working together to provide high quality facilities for people, better protection for wildlife and landscape and increased opportunities for people to experience and enjoy this part of the Lincolnshire coast.

The Inns on the Edge project is funded by Historic England to look at the significance of rural pubs along the Lincolnshire coast. As well as researching the history of these valued historic pubs the project will also look at the pressures on these businesses and the opportunities for them to thrive and innovate.



This walk will take you past three pubs, The Red Lion at Mumby and the Saracens Head and Victoria Tavern in Hogsthorpe.

# Mumby to Hogsthorpe



8km (5 miles) or 9.5km (6 miles)



Approx 2.5 or 3 hours to complete

- 1 With your back to the pub turn right.
  - ▶ Cross the main road (A52) with care and follow the road/layby in front of the church.



The church of St Thomas dates from the 13th century but in the Norman style. In the churchyard are the remains of a 14th century limestone cross with an octagonal base. The church is also now used a community space known as Becketts.

The Primitive Methodist chapel was first built in 1836 and seated 100 people. In 1909 it was rebuilt to seat 75 people. It closed in 2008 and is now a house.

- 2 Take the public footpath on the left adjacent to the old Methodist chapel.

- ▶ Cross the bridge and follow the path to the right, between a hedge and fence.
  - ▶ Cross another bridge and turn left to follow the path between hedges to a bridge.
  - ▶ Cross the bridge and continue between hedges to a gate and field.
- 3 Walk straight across the field to a waymarker post next to a drain. Turn left and follow the field edge and drain to a bridge.
    - ▶ Cross the bridge and walk straight on alongside the drain.
    - ▶ At the end of the field carry straight on over the bridge and follow the path straight on to a road.
  - 4 Cross the road and follow the public footpath straight ahead across a field to a bridge in the hedge.
    - ▶ Cross the bridge and follow the path ahead along the field edge.
    - ▶ At the field corner cross the bridge and track and continue straight on across the middle of the field to a bridge. Follow the path diagonally right across the field to the corner.



Reproduced from OS mapping and with permission of the controller of HMSO (c) Crown Copyright. Unauthorised reproduction infringes Crown Copyright and may lead to civil proceedings. OS licence 100025370.

- 5
  - ▶ Go through the hedge and bear diagonally right across the field corner. Go through the hedge and cross the field by bearing left to a bridge.
  - ▶ Walk straight ahead beside the drain to another bridge. Continue on beside the drain.
  - ▶ Cross another bridge and continue beside the drain, which is now on your left.
- 6
  - ▶ Cross the farm bridge and continue ahead along the field edge.
  - ▶ Bear left over a small bridge and walk straight ahead. At the field corner bear diagonally right to the corner of the metal fence.

- 7 Turn right and follow the road to a T-junction with the A52. Look out for the Saracens Head pub and the village information boards.



Saracens Head is a Grade II listed public house and dates from the early 18th century with alterations in the early 19th and 20th centuries. A landmark for locals and visitors, Saracens Head was a place where money frequently changed hands - not for drinks - but property and livestock. Pubs often held auctions (and some still do); Saracens Head hosted regular auctions between 1833 to 1938 some reportedly 'so packed as to be uncomfortable'.

For the shorter walk and to visit the Victoria Tavern

- 8 Turn left and follow the High Street. As the main road bends to the right turn left onto Mill Lane.

Originally a beerhouse, the Victoria Tavern has been serving customers since 1869. In 1909 it was one of 3 licensed houses in Hogsthorpe, the others being the Saracens Head and The Bell. In 1900, the licensee was William Parish and under him the pub was partly rebuilt. The alterations helped compete with The Bell and Saracens Head as a place to stay for visitors.

- 9 Follow Mill Lane for approx. 250m.
- 9 Turn left onto Mill Lane Close and then left onto Goodwin Drive and follow the road straight ahead to a T-junction.
- 10 Turn right, walk past the school and village hall. Take the first turning on the left, Langham Road and follow the road for approx. 350m to where it bends to the right. Join the directions for the longer walk at 15

For the longer walk

- 8 Cross the road with care and follow the public footpath into the church yard.
- 9 Follow the path past the tower and then to the left to a gate at the end of the wall behind a brick building.

The church of St Mary was built in the 12th century with an Early English west tower. The village war memorial, made of Cornish granite, is in the churchyard. The 3m obelisk was dedicated in 1920 and unveiled by the Right Hon. Dr Christopher Addison MP, the Minister of Health under Prime Minister Lloyd George.

- 9 Cross the paddock by bearing left to a gate in the corner. Walk along the driveway to the road.
- 11 Cross the road with care and follow the footpath opposite, at the side of the old methodist chapel.

The chapel was built in 1804 to seat 357 with a schoolroom added in 1848. It was rebuilt on the same site in 1863 when the seating capacity was reduced to 180. In 1996 the chapel was sold and has since been converted into flats.

- ▶ At the field bear diagonally left heading towards a bridge and the house in the distance.
- ▶ Cross the bridge and bear right to a fingerpost by a drain. Turn right and follow the field edge.
- ▶ At the trees turn right over the culvert bear left to follow the path to a drain. Walk straight across the field to a bridge.

**12** Don't cross the bridge but turn left to follow the drain to a fence and fingerpost. Turn left to a track.

- ▶ Turn right and follow the track past allotments, to a road.

**13** Turn right and after approx. 100m turn left along a public footpath and follow it straight ahead along the field edge.

- ▶ Just before the gate into the building complex, turn right and then left to follow the path to a road.

**14** Turn left. Follow the road for approx. 700m and take the second road on the right, Langham Road.

- ▶ Follow the road for approx. 350m to where it bends to the right.

**15** Leave the road here to follow the No Through road straight ahead. Continue as it becomes a track and reaches a road, approx. 1200m (0.75 miles)

**16** Cross straight over the road to follow a public footpath slightly left across the fields, heading towards the house and barns. Cross over a culvert, to a gap in the hedge and a track.

**17** Turn right then almost immediately left to walk along the track towards a house, Wesley Farm House.

- ▶ After approx. 100m turn left onto a path across fields to a bridge. Cross the bridge and bear right to another bridge. Turn right then almost immediately left to walk alongside the drain, keeping the drain on your left.

The many drains in the area are great places to look for wildlife. As well as buzzing insects during the warmer months, keep your eyes peeled for a glimpse of a water vole, Ratty in The Wind in the Willows.

**18** At a fingerpost and where the drain turns left, turn left and follow the grass track. Follow the track as it becomes a tarmac lane and reaches a road junction.

**19** Turn left towards Mumby village.

- ▶ At the T-junction with the A52 turn left to return to the starting point.

The Red Lion has been the focal point of the village since the 18th century and would have served as a staging post for those travelling to and from the coast. Inside, the pub retains much of its original charm with a traditional seating layout, exposed ceiling beams and period brick fireplace. Over 400 pubs share the same name as the Red Lion, making it the most popular pub name in England.

The fishing pond on the right is a result of clay extraction for the local brickworks during the 19th century. The bricks produced were used in the construction of local buildings.



# Be a responsible walker



Please remember the countryside is a place where people live and work and where wildlife makes its home. To protect the Lincolnshire countryside for other visitors please respect it and on every visit follow the Countryside Code. Thank you.

- ▶ Be safe - plan ahead and follow any signs
- ▶ Leave gates and property as you find them
- ▶ Protect plants and animals, and take litter home
- ▶ Always keep dogs under control and in sight
- ▶ Consider other people



- ▶ Most of all enjoy your visit to the Lincolnshire countryside

If you would like to request a copy of this leaflet in an alternative format or a different language please contact us.

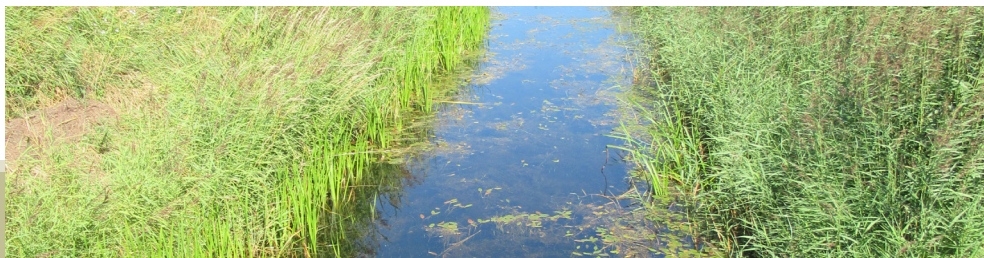
LINCOLNSHIRE COASTAL COUNTRY PARK

Tel: 01522 782070

Minicom: 01522 552055

Email: [lccp@lincolnshire.gov.uk](mailto:lccp@lincolnshire.gov.uk)

Web: [www.lincolnshire.gov.uk/coast-countryside](http://www.lincolnshire.gov.uk/coast-countryside)



# Walk Information



## Walk location:

Mumby is situated on the A52 14 ½ km (9 miles) north of Skegness in the Lincolnshire Coastal Country Park.

## Starting point:

Red Lion pub, Hogsthorpe Road, Mumby.  
Postcode: LN13 9SD  
Grid reference: TF 514 744  
what3words: Decorate.Crucially.Suggested

## Parking:

Please park responsibly in the village.

## Public transport:

Buses run regularly between Skegness and Mablethorpe.

For further information and times call the Traveline on 0871 200 2233 or visit [www.lincsbus.info](http://www.lincsbus.info)

## Walk length:

8km (5 miles) or 9.5km (6 miles)

At a leisurely pace the walk will take approximately 2.5 or 3 hours to complete.

## Type of walk:

The walk uses field paths, tracks and quiet lanes and may be muddy in places.

You are likely to encounter stiles and livestock on this walk.

## Ordnance Survey maps:

Explorer 274 Skegness, Alford & Spilsby.  
Landranger 122 Skegness and Horncastle.

## Refreshments:

The Red Lion pub, Mumby  
Saracens Head, Hogsthorpe  
Victoria Tavern, Hogsthorpe  
Shops, Hogsthorpe

THE LINCOLNSHIRE COASTAL COUNTRY PARK IS A PARTNERSHIP BETWEEN:

Lincolnshire County Council | Lindsey Marsh Drainage Board | National Trust  
East Lindsey District Council | Natural England | Environment Agency  
Lincolnshire Wildlife Trust | National Farmers Union